

GreenSpeed Boost Kit e+

with Bosch Smart System

Build Notes

For 20" Front Wheels



Failure to match Boost Kit and the trike specifications it is programmed for could result in an error code, will cause the Boost Kit to operate improperly, and could void the warranty of the Boost Kit.

PLEASE NOTE

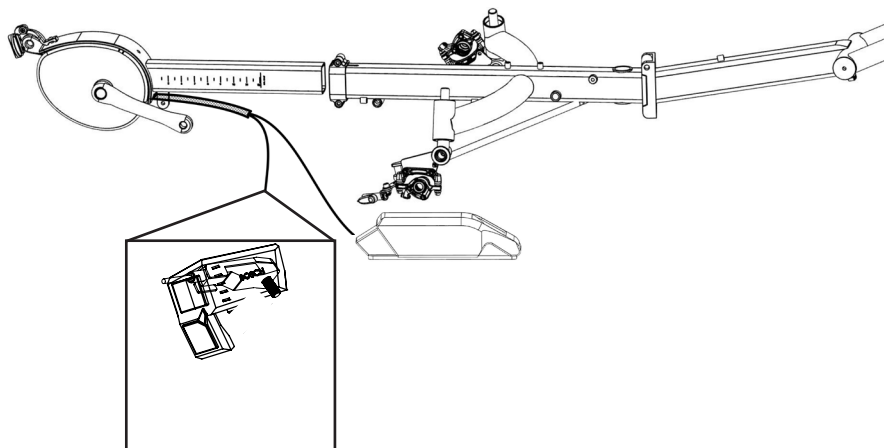
The 50T chainring is to be used with 20" rear wheel models - Magnum SD and XL.

The 40T chainring is to be used with 26" rear wheel model - Magnum BW.

Perform the following before installing the Bosch Boost Kit:

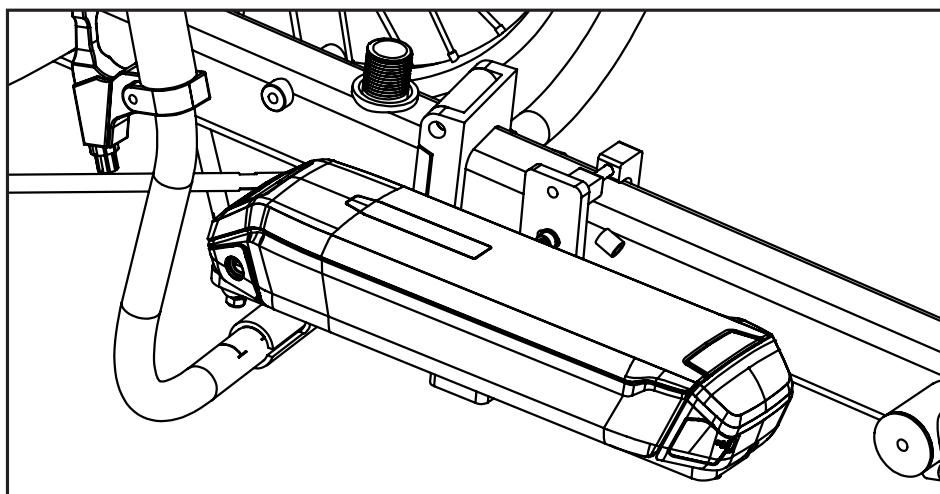
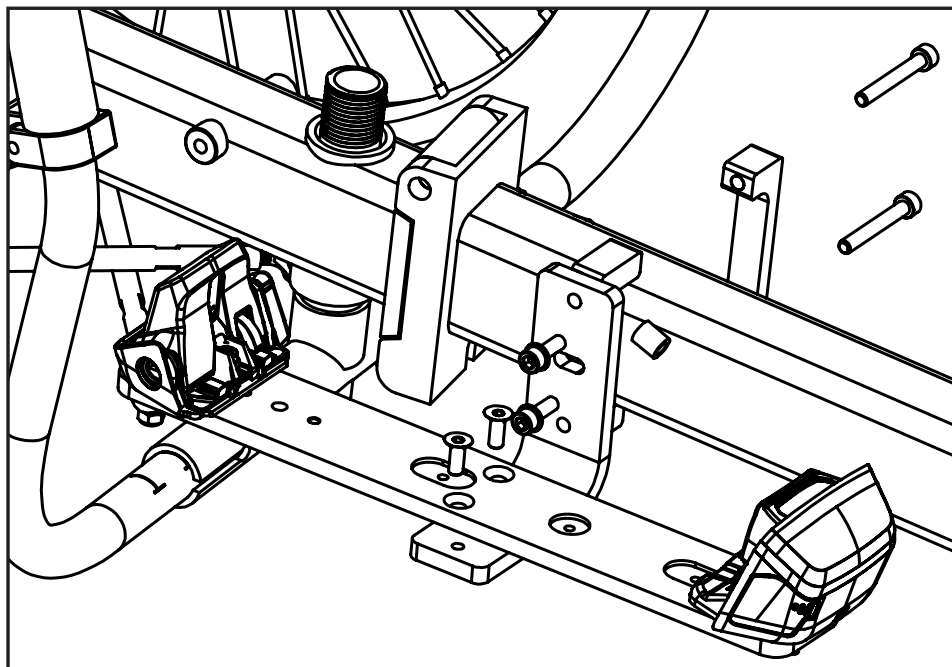
- Remove pedals from stock boom.
- Detach shift cable from front derailleur.
- Remove front derailleur.
- Remove left hand shifter assembly.
- Install end cap into handlebar.
- Break chain.
- Remove stock boom.

- 1 Using caution to not stress wires, insert boom to desired length and tighten boom clamp bolts to 12-13Nm.



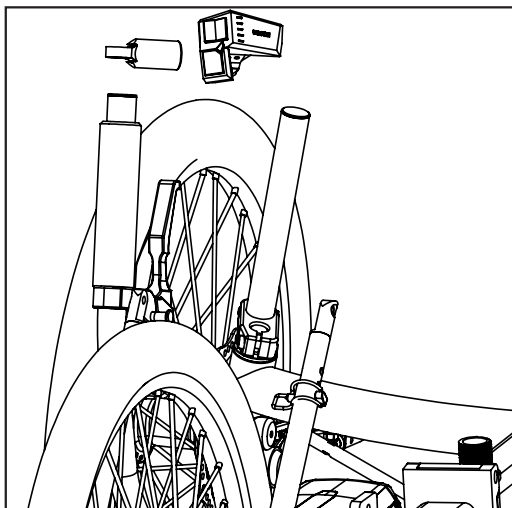
2

Install battery mount onto frame, and battery onto mount.



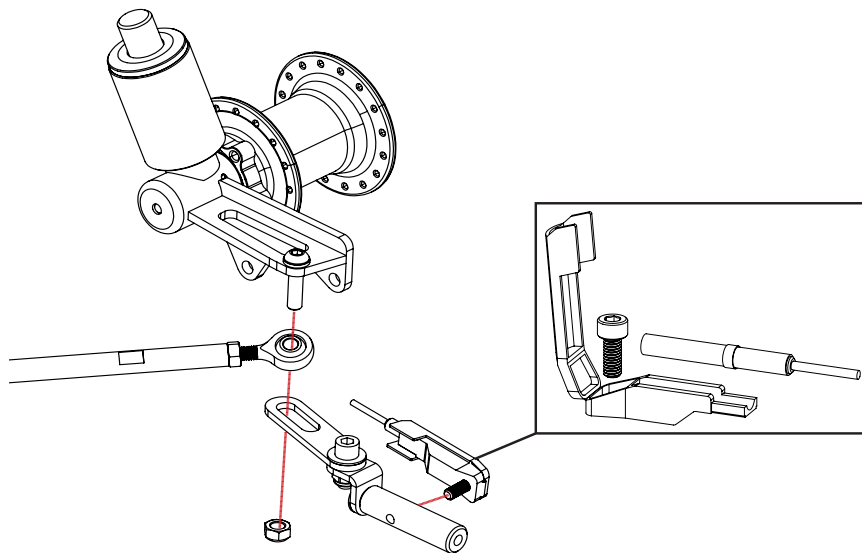
3

Install accessory mount and LED Remote onto handlebar. Refer to step 5 for wire routing.



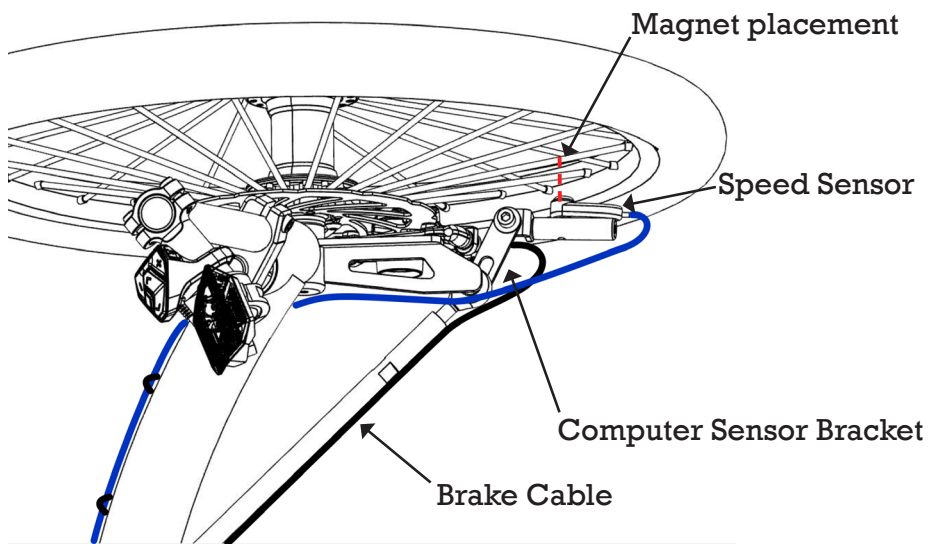
4

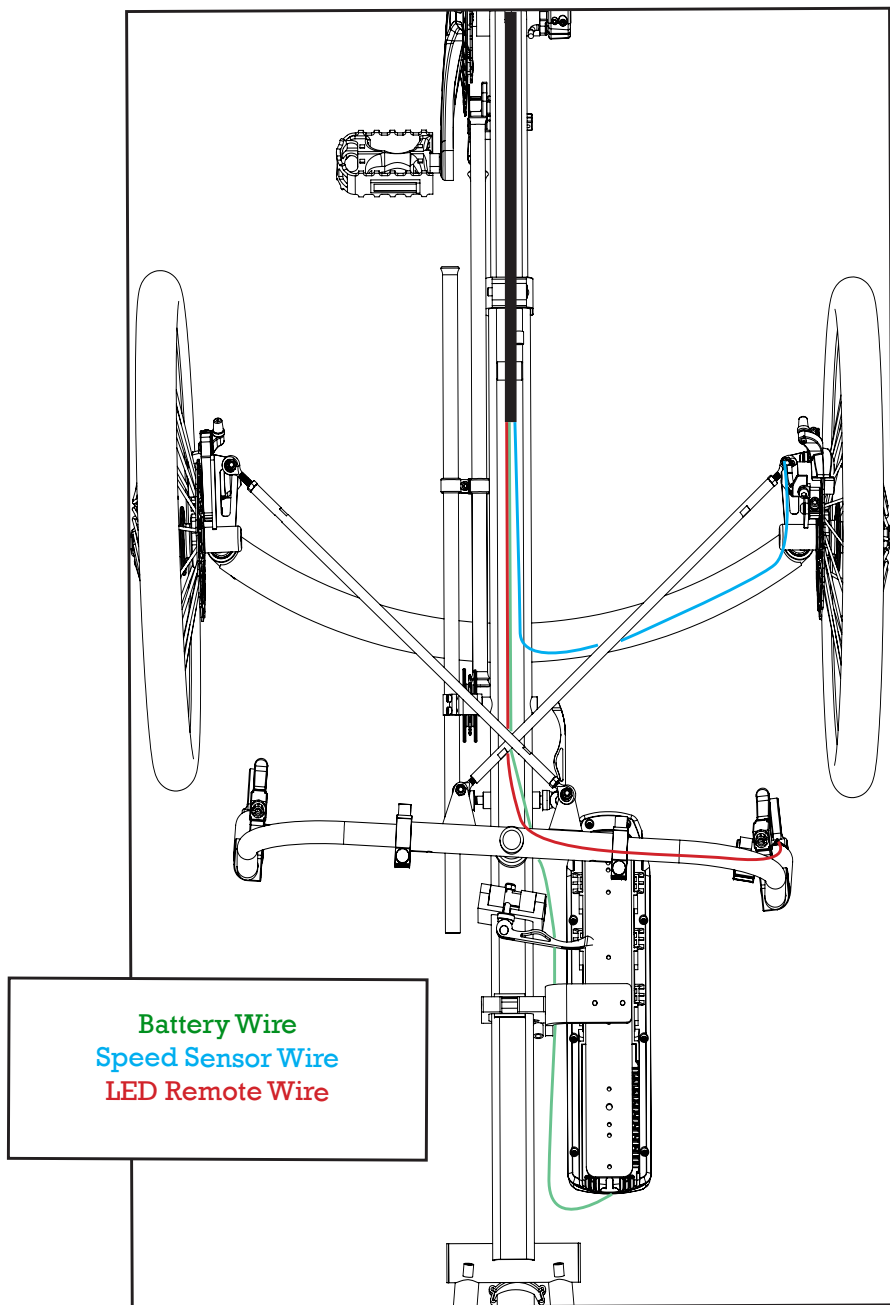
Install speed sensor and magnet on non-drive side of trike. Ensure wires are secure and clear of brake and steering components.



5

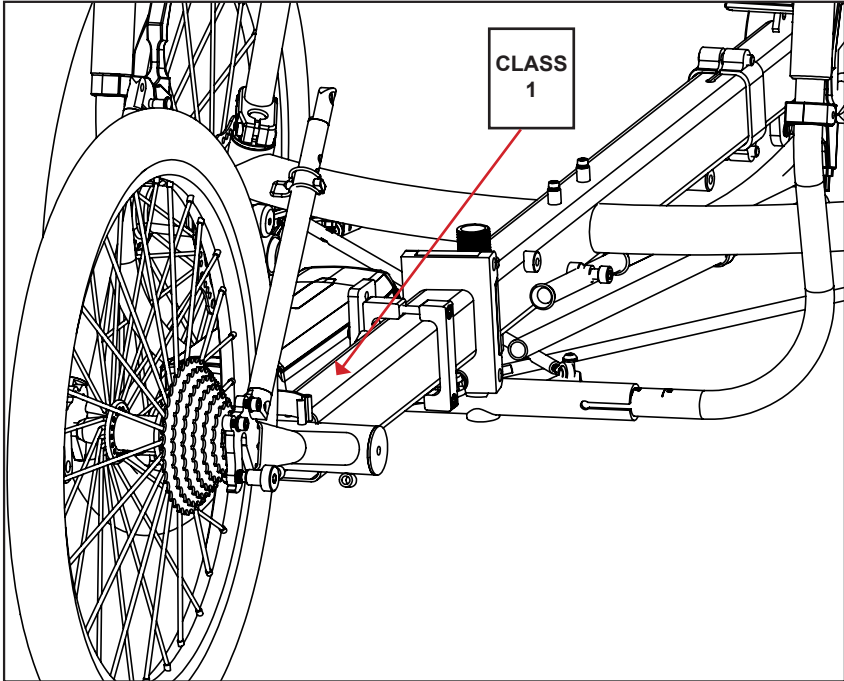
Recommended wire routing





6

Affix the Class 1 E-bike sticker on top of the mainframe near the chainstays.



The 50T chainring is to be used with 20" rear wheel models - Magnum SD and XL.

The 40T chainring is to be used with 26" rear wheel model - Magnum BW.

7

Final Checklist:

- Reinstall chain and pedals
- Charge the battery pack completely.
Instructions for charging are located on the GreenSpeed website:
<https://greenspeed-trikes.com/resources/manuals/>
- Secure the battery with the additional safety strap.
- Download the Bosch Flow App.
- Double check your work.
- Test ride the finished product.

GreenSpeed

800.945.9910 | www.greenspeed-trikes.com
4460 40th St. SE | Grand Rapids, MI 49512 USA