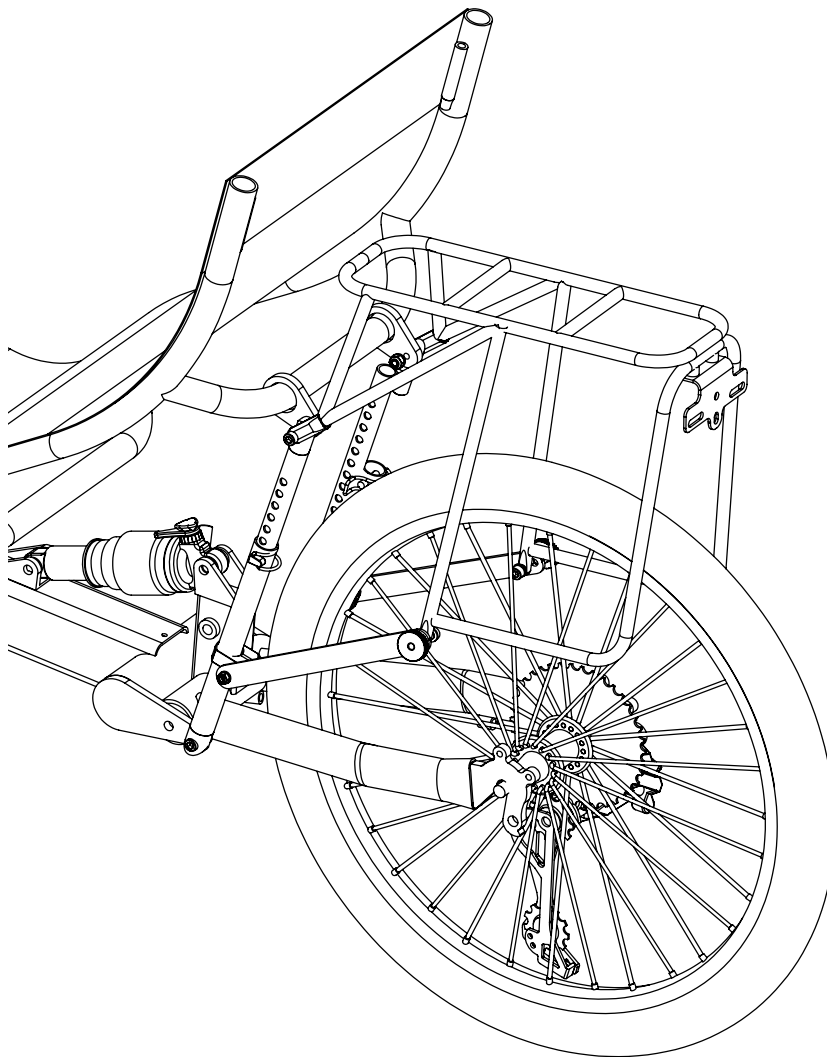




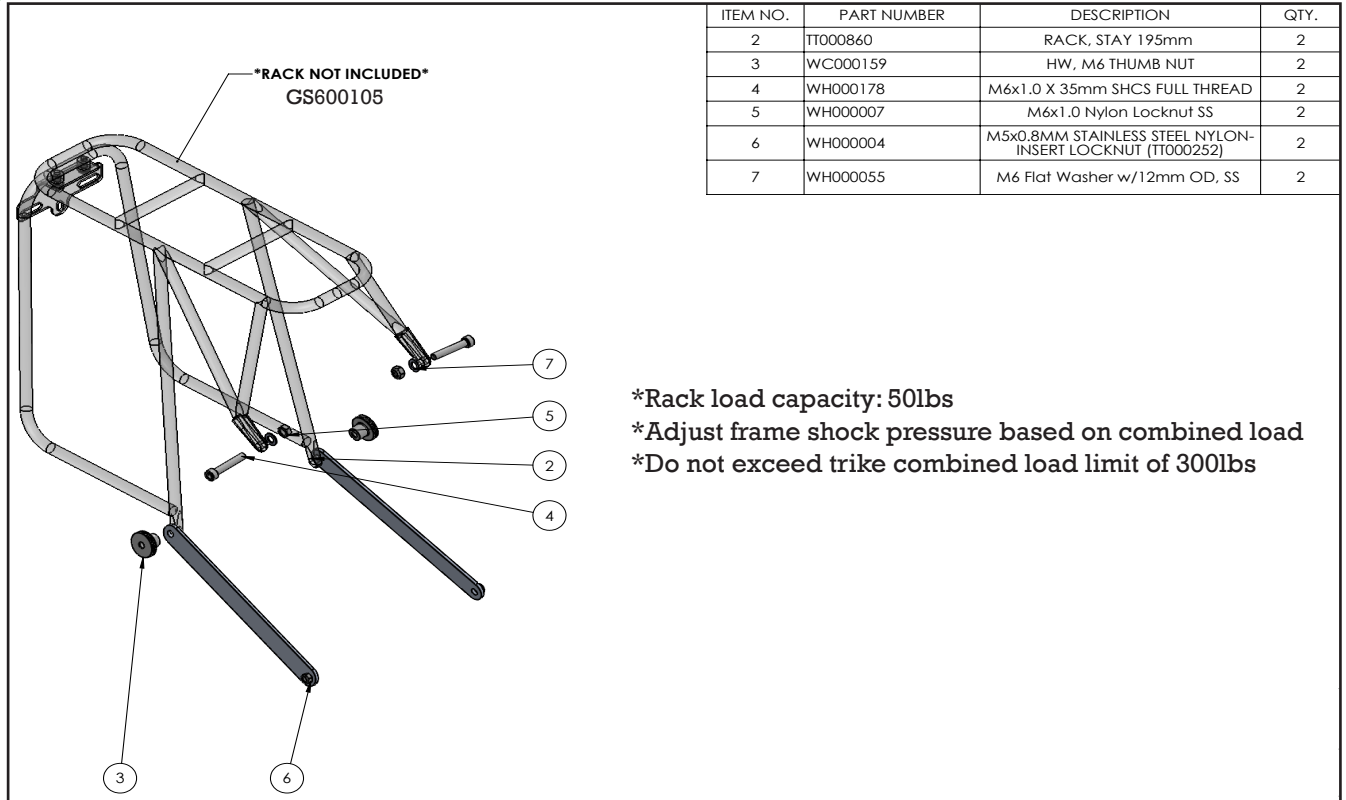
# GT20RS Rear Rack Fit Kit (GS600139)

\*REAR RACK SOLD SEPARATELY\*



Revised 01/2025

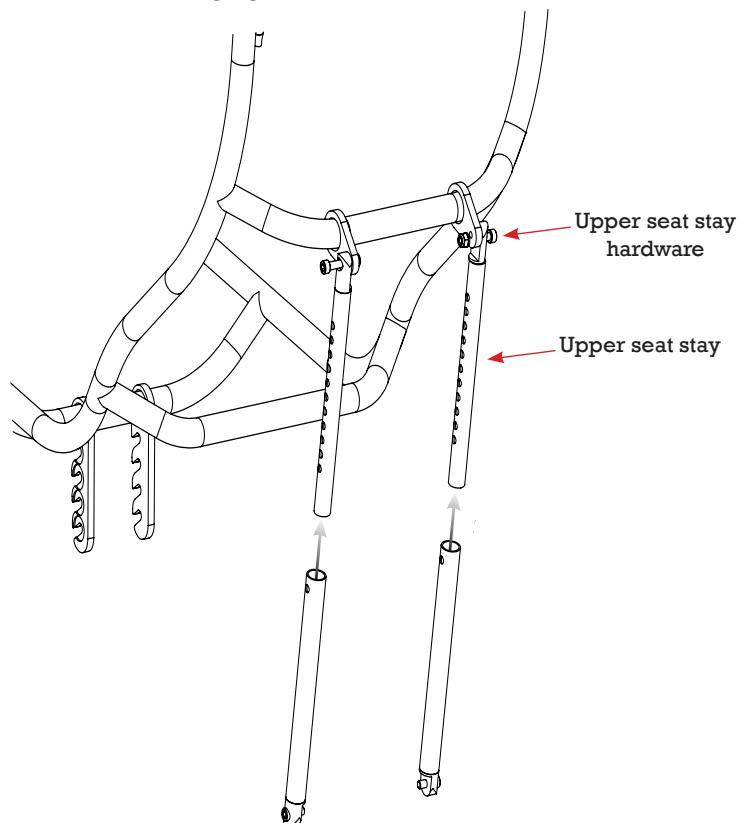
## PARTS LIST:



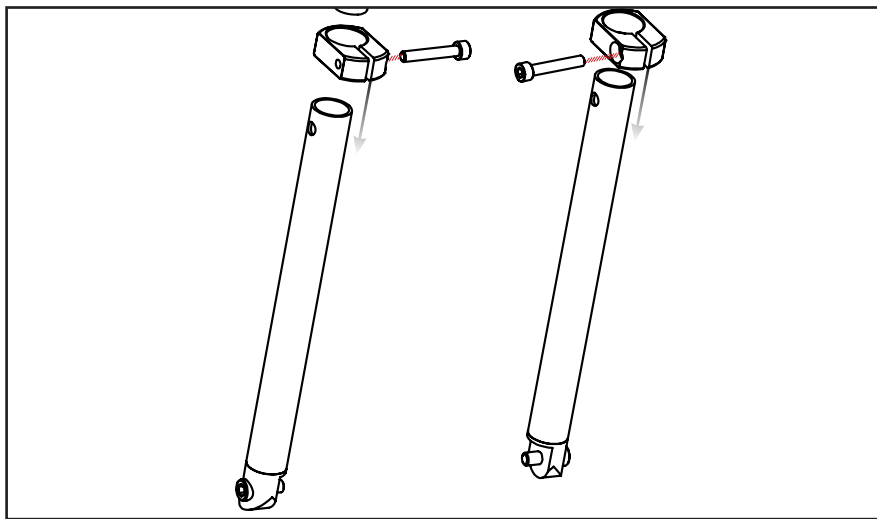
1

Uninstall upper seat stays and hardware.

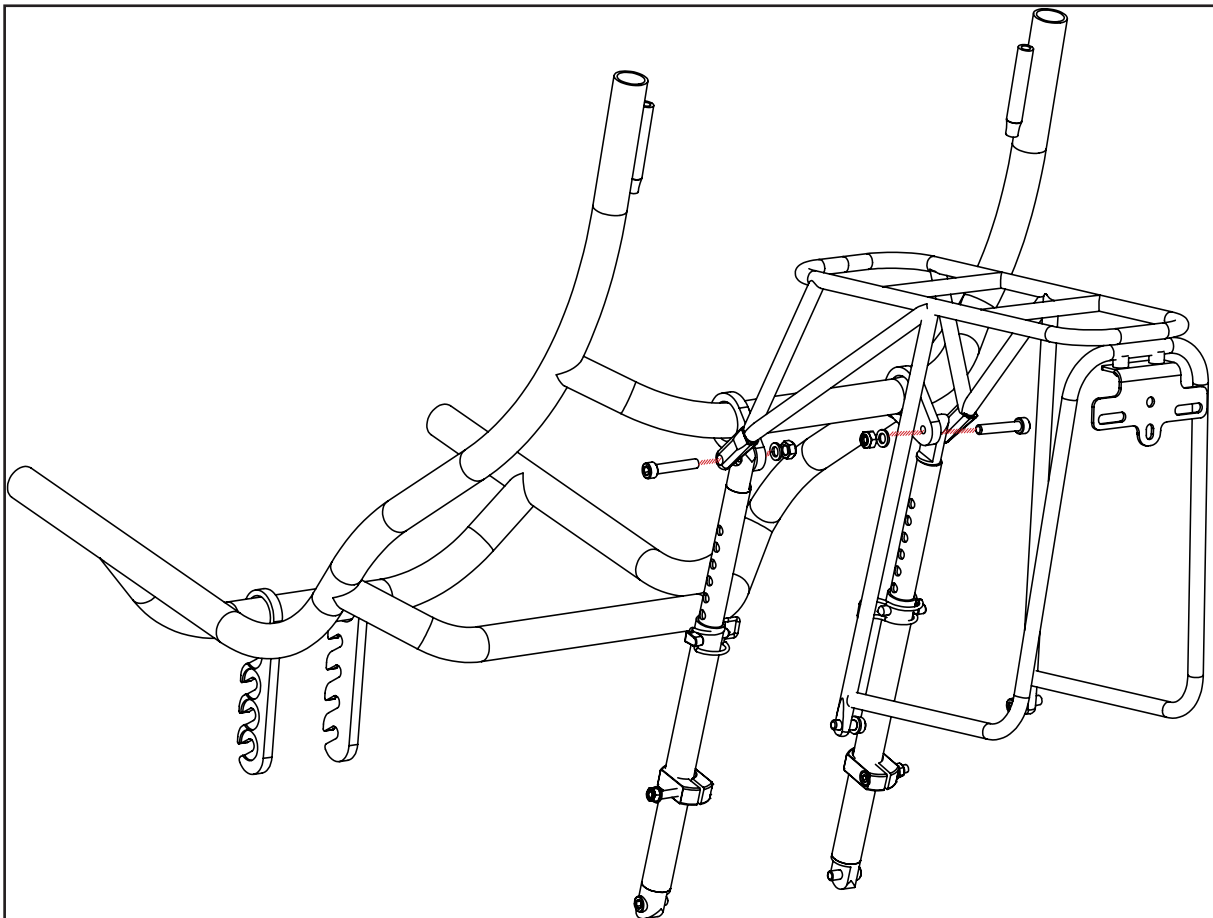
Remove seat stay pins and disengage upper seat stays from lower seat stays.



- 2 Slide 19mm rack clamps over lower seat stays leaving bolts loose.

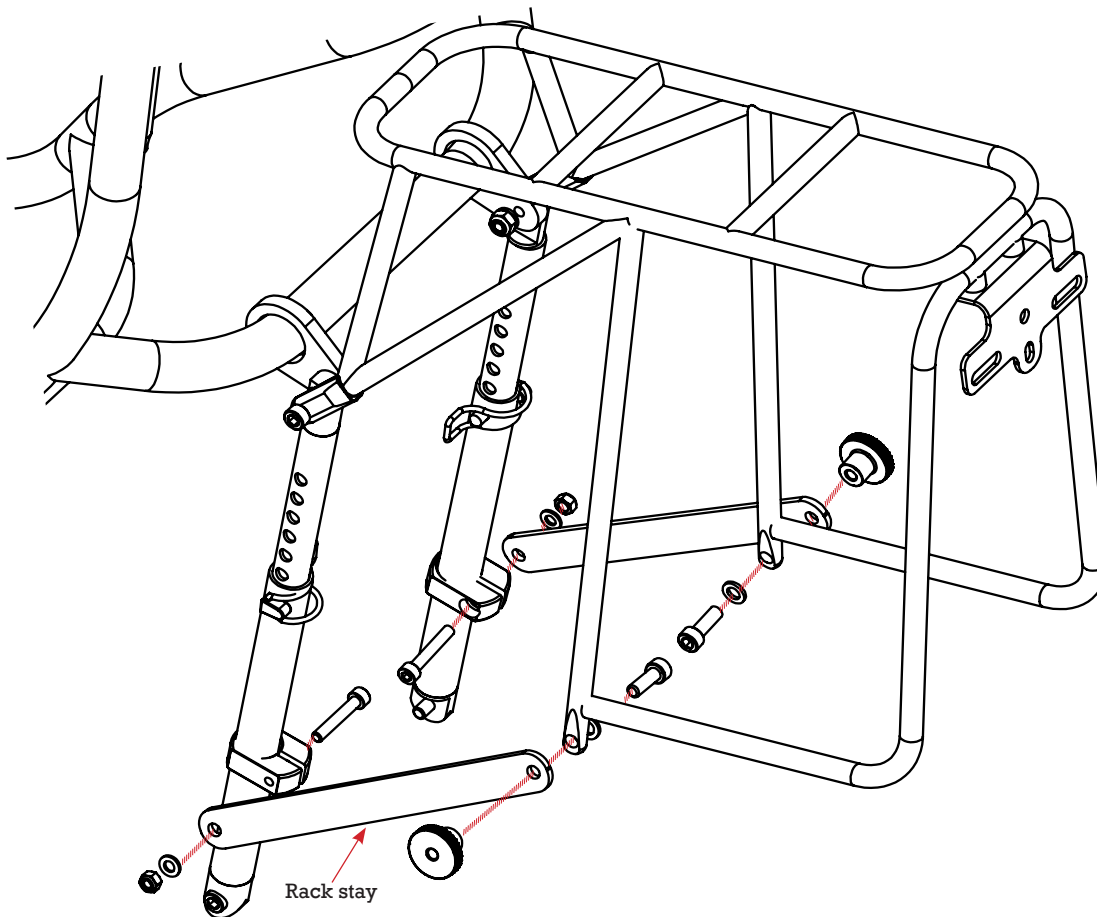


- 3 Attach rack and seat stays to seat frame using the M6x35 bolts, M6 washers, and M6 nuts.



4

Attach rack stays to 19mm rack clamps and rack. See parts list for fastener specifications.



5

Adjust seat to desired height and angle. Level rack and secure 19mm clamp bolts.

