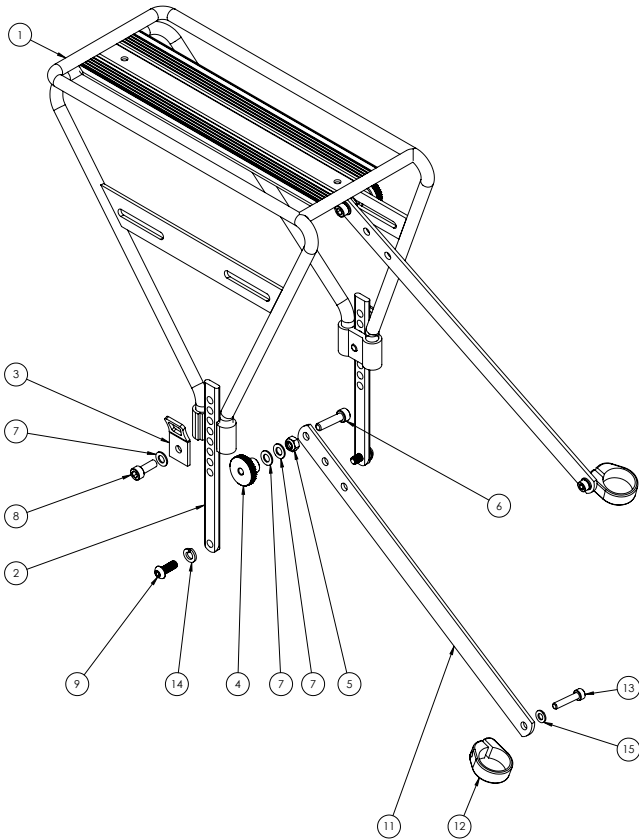


# GreenSpeed

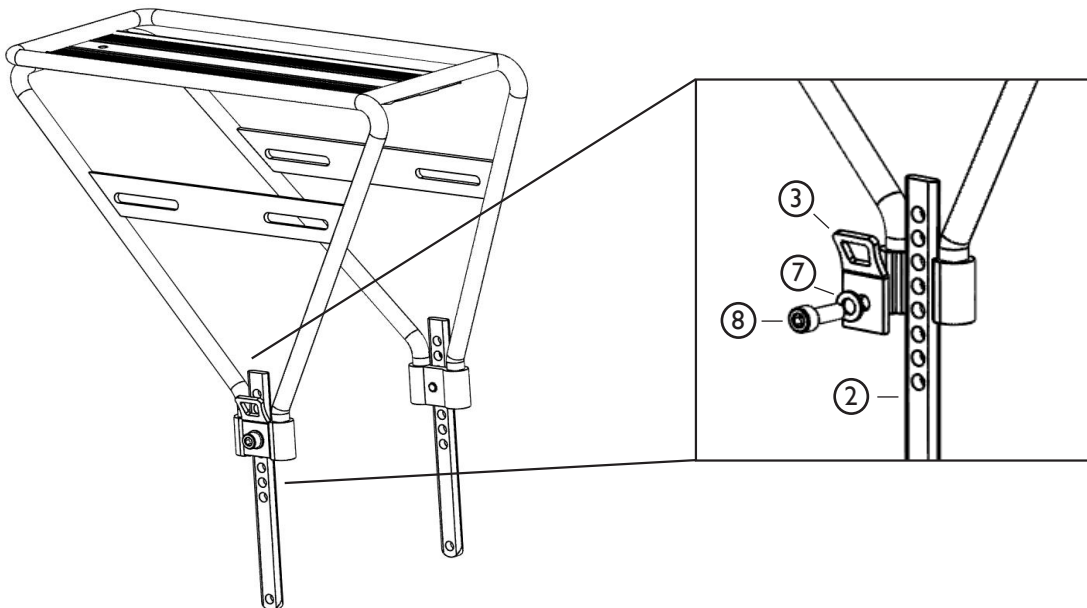
## Magnum Rear Rack (GS600123)

Tools Needed: 10mm Open Ended Wrench, 4mm & 5mm Allen Wrench

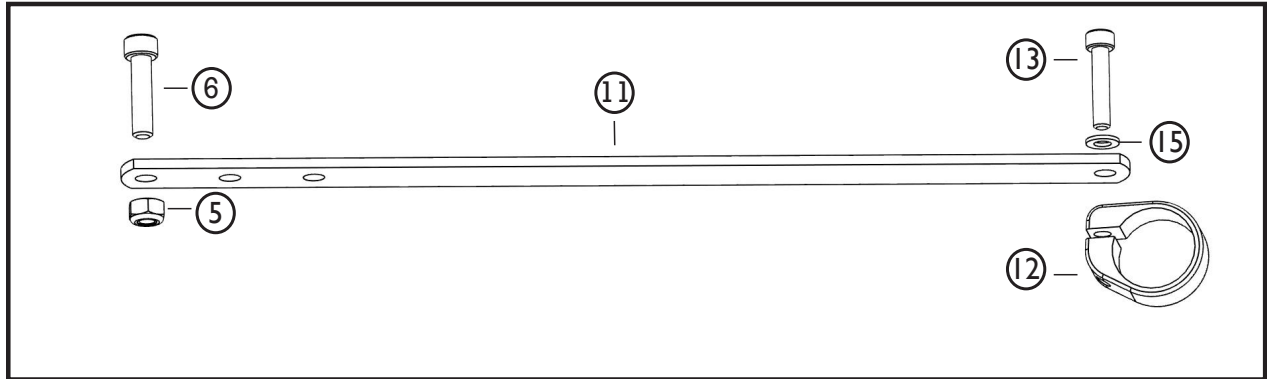


ITEM NO.	PART NUMBER	DESCRIPTION	QTY.
1	WC000160	REAR RACK WELDMENT	1
2	WC000158	RACK RISER	2
3	WC000161	STRAP, TAB REAR RACK	2
4	WC000159	HW, M6 THUMB NUT	2
5	WH000007	M6x1.0 Nylon Locknut SS	2
6	WH000001	M6x1.0 X 25mm SHCS SS	2
7	WH000055	M6 Flat Washer w/12mm OD, SS	6
8	WH000056	M6x1.0 x 16MM SHCS STAINLESS STEEL	2
9	WH000148	M6x16mmL BHCS, SS	2
10	TT600033	STRAP, RACK, DOUBLE HOOK, THREE PIECE (BY-601N)	1
11	WC000165	RACK, STAY, 305mm W/3 REAR MOUNTING HOLES	2
12	WC000035	CLAMP, 25.4mm THRU, BOLT PERP. TO FLAT SIDE	2
13	WH000032	M5x25mm SHCS SS	2
14	WH000058	M6 Split Lock Washer SS	2
15	WH000080	M5 Flat Washer SS, 10mm OD	2

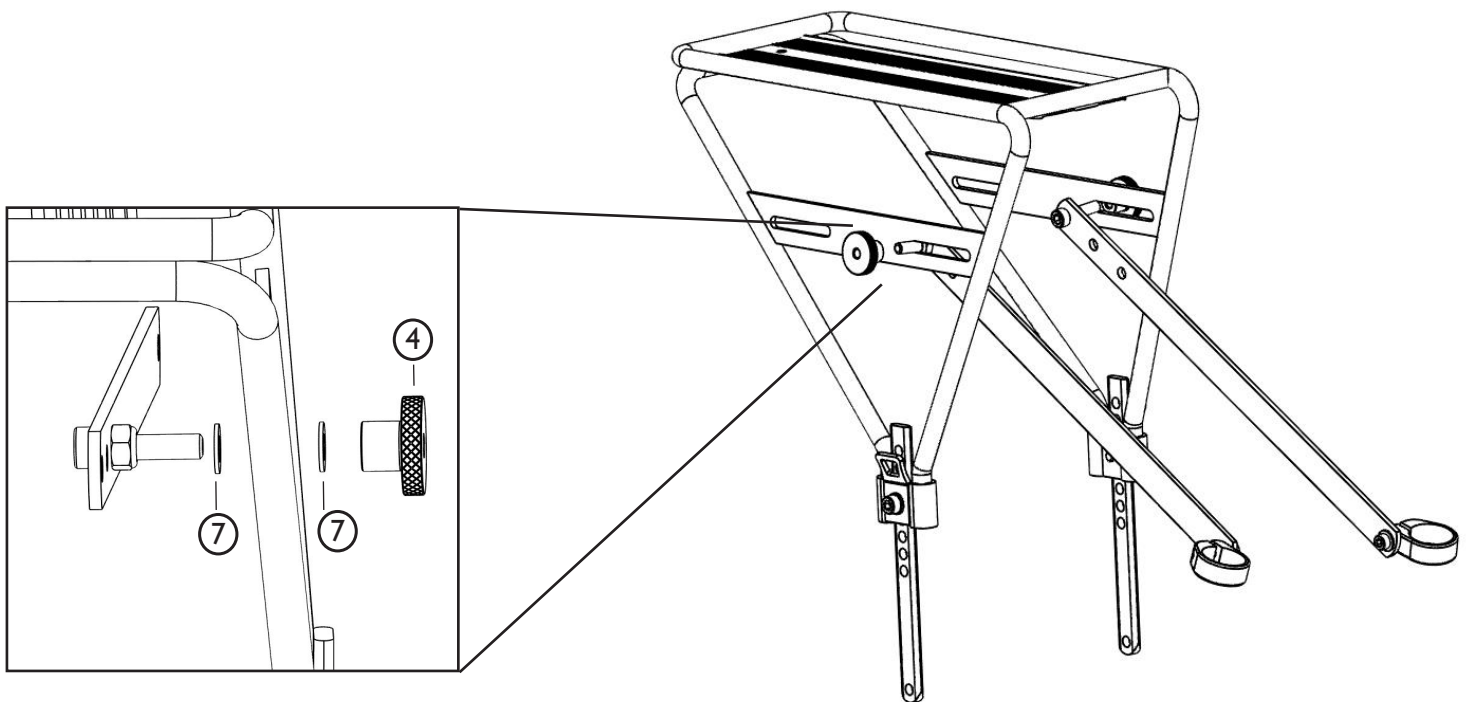
**1** Attach Rack Risers and Strap Tabs using M6x16 bolts and M6 flat washers. Note: Set riser height based on clearance needed for rear wheel and fender.



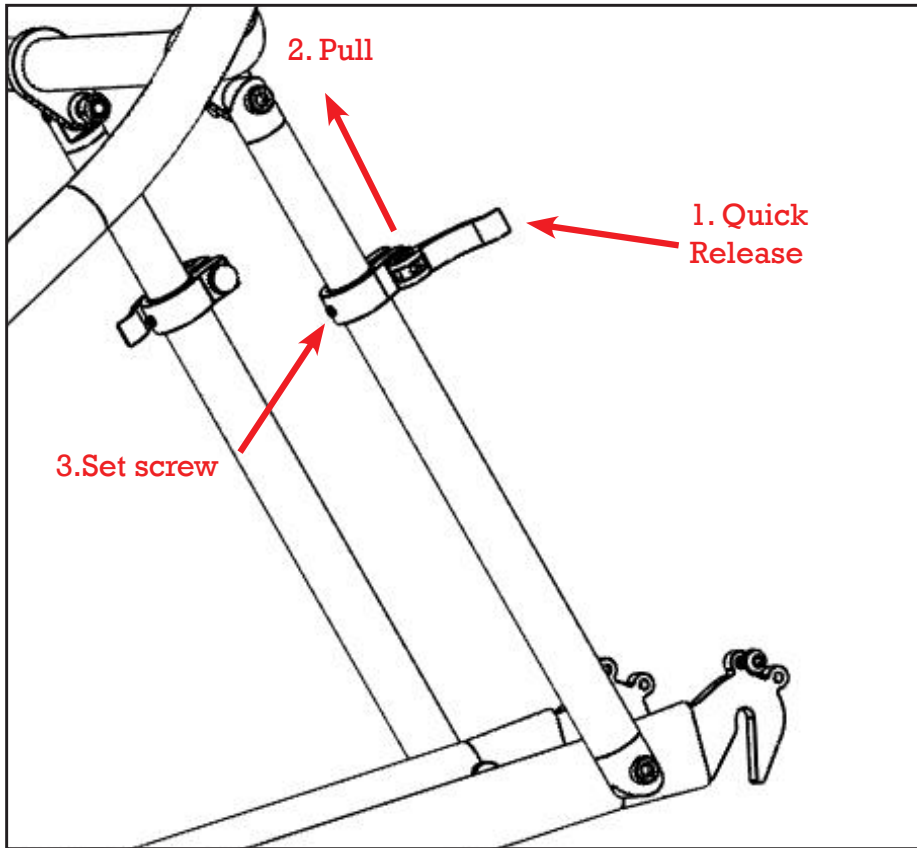
**2** Assemble rack stays. Refer to parts list on page 1 for fastener specifications.



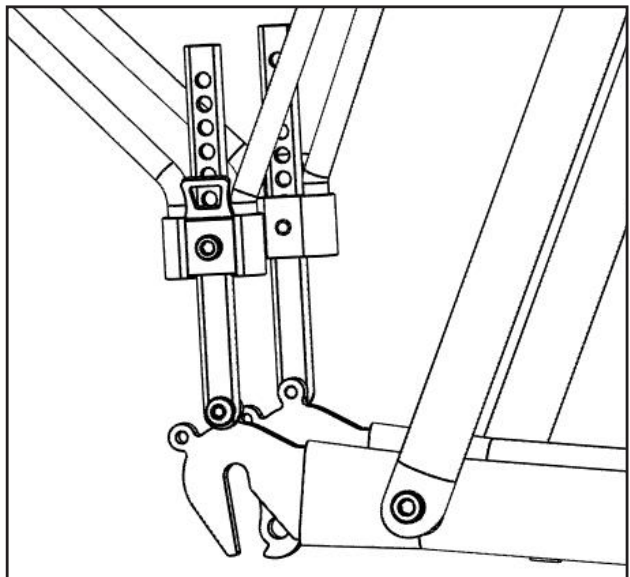
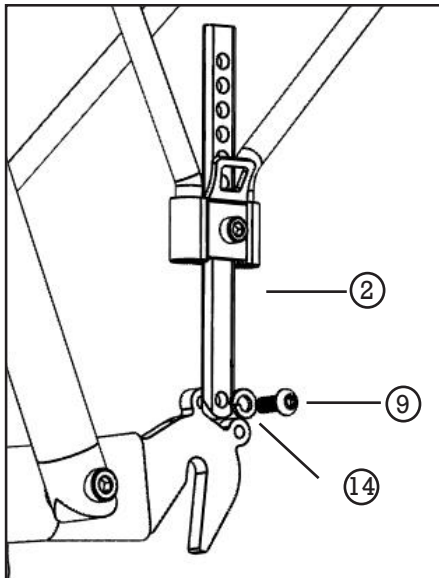
**3** Attach rack stay assemblies to rear rack using the M6 thumb nuts. Leave thumb nuts loose for final adjustment. Note: Choose the appropriate rack stay mounting slot for best alignment with trike.



- 4** Loosen seat stay quick release levers and detach upper seat stays from lower seat stays. Loosen seat stay quick release set screws and remove clamps.



- 5** Attach rack riser to frame using M6x16 bolt and M6 split washer.



- 6 Slide rack clamp/stay assembly onto seat stays. Reinstall seat stay clamps and attach seat stays. Level the rack and tighten all fasteners.

