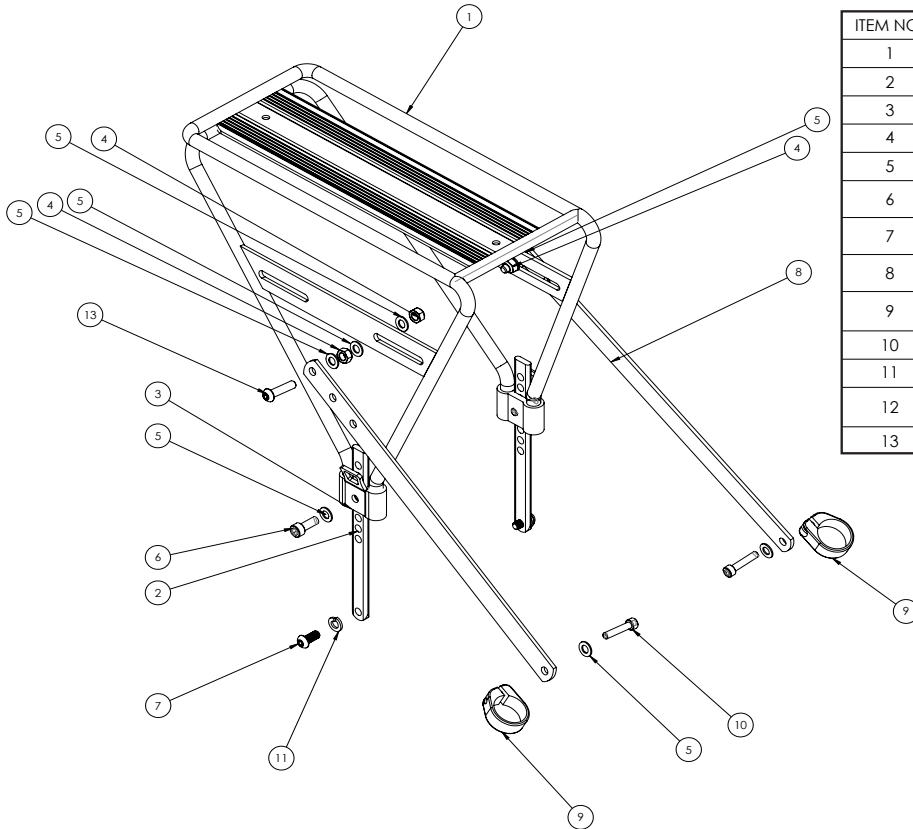




# Magnum Rear Rack (GS600123)

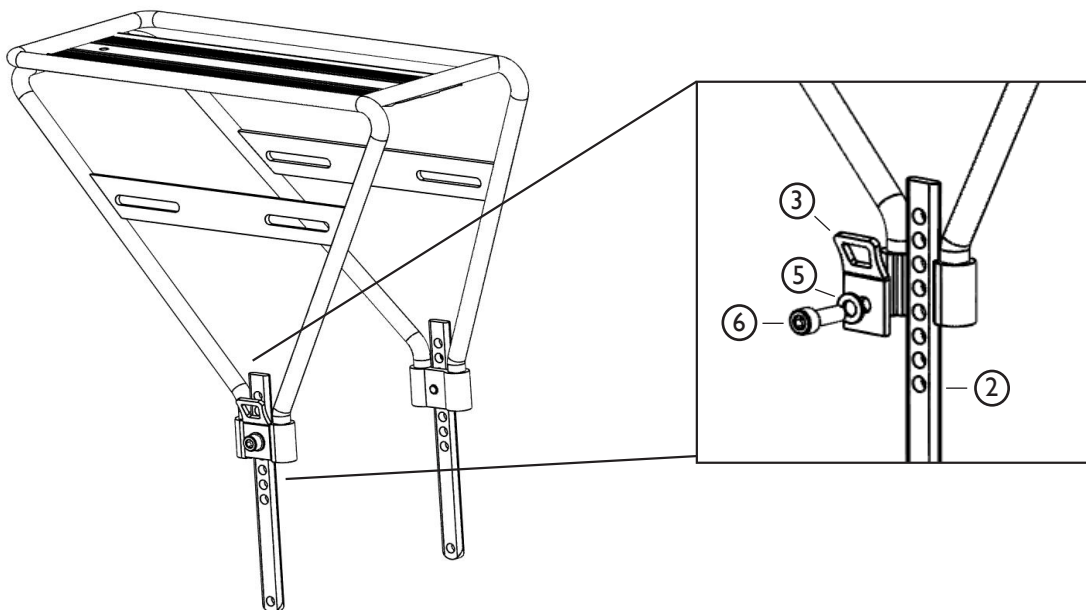
Tools Needed: 10mm Open Ended Wrench, 4mm & 5mm Allen Wrench



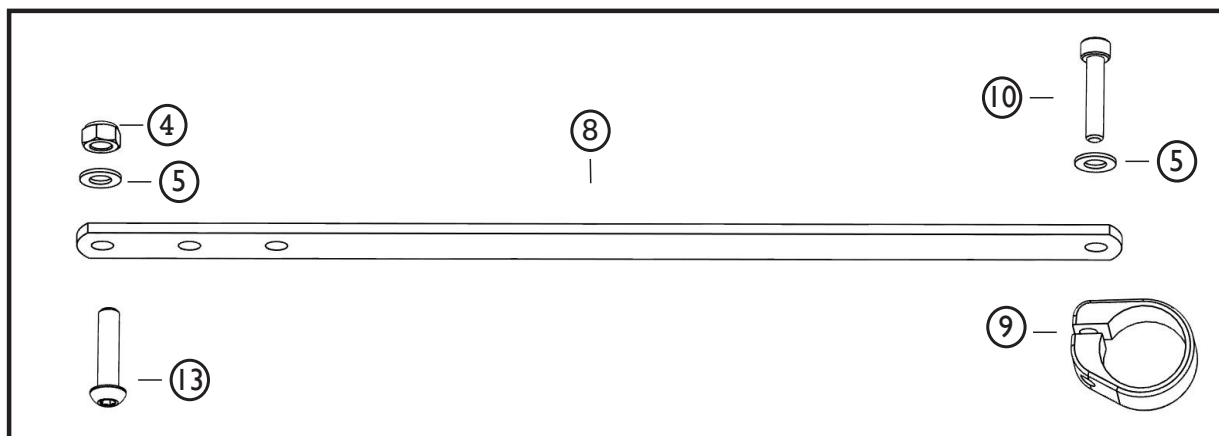
ITEM NO.	PART NUMBER	DESCRIPTION	QTY.
1	WC000160	REAR RACK WELDMENT	1
2	WC000158	RACK RISER	2
3	WC000161	STRAP, TAB REAR RACK	2
4	WH000007	M6x1.0 Nylon Locknut SS	4
5	WH000055	M6 Flat Washer w/12mm OD, SS	10
6	WH000056	M6x1.0 x 16MM SHCS STAINLESS STEEL	2
7	WH000102	M6 x 14mm L, BHCS	2
8	WC000165	RACK, STAY, 305mm W/3 REAR MOUNTING HOLES	2
9	WC000035	CLAMP, 25.4mm THRU, BOLT PERP. TO FLAT SIDE	2
10	WH000032	M5x25mm SHCS SS	2
11	WH000058	M6 Split Lock Washer SS	2
12	TT600033	STRAP, RACK, DOUBLE HOOK, THREE PIECE (BY-601N)	1
13	WH000022	M6x1.0 x 25mmL SBHCS SS	2

1

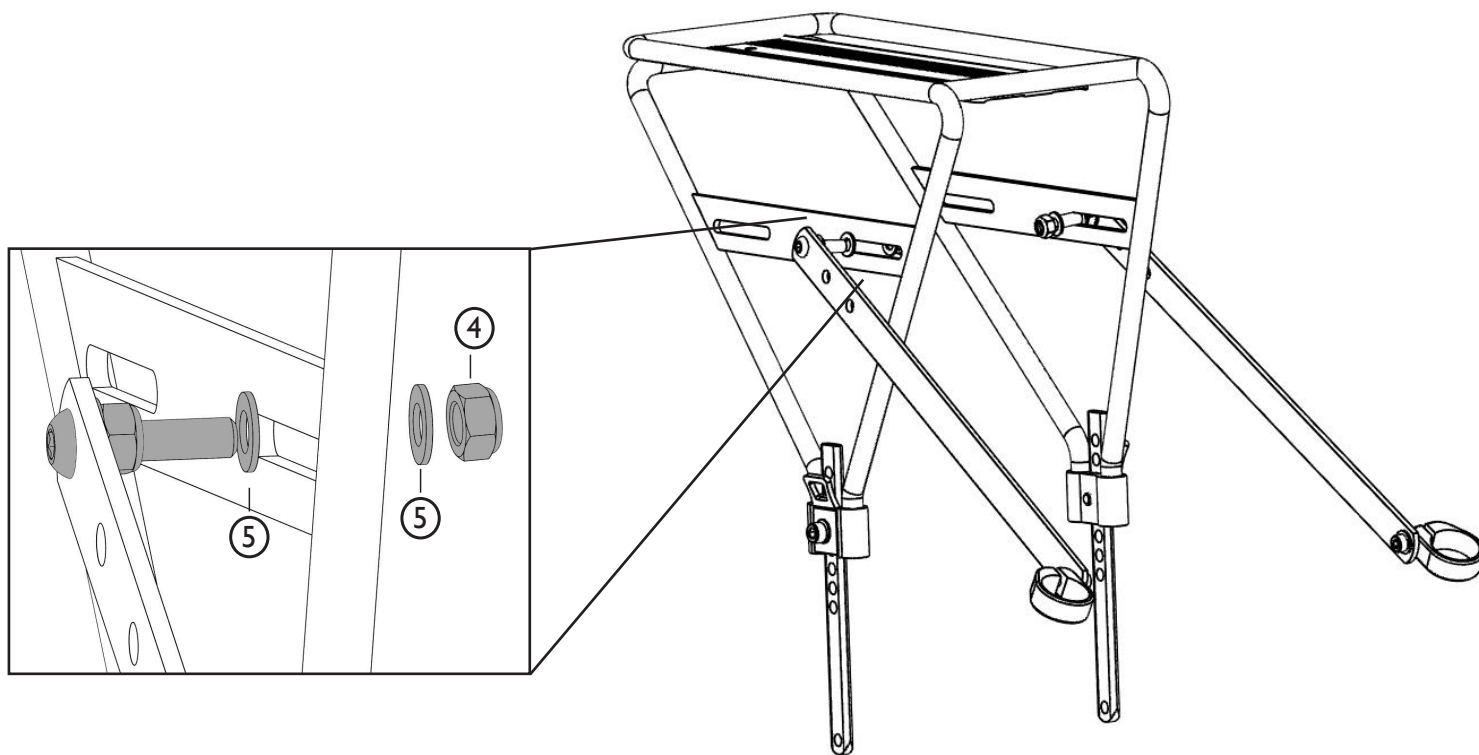
Attach rack risers and strap tabs using M6x16 bolts and M6 flat washers. Note: Set riser height based on clearance needed for rear wheel and fender.



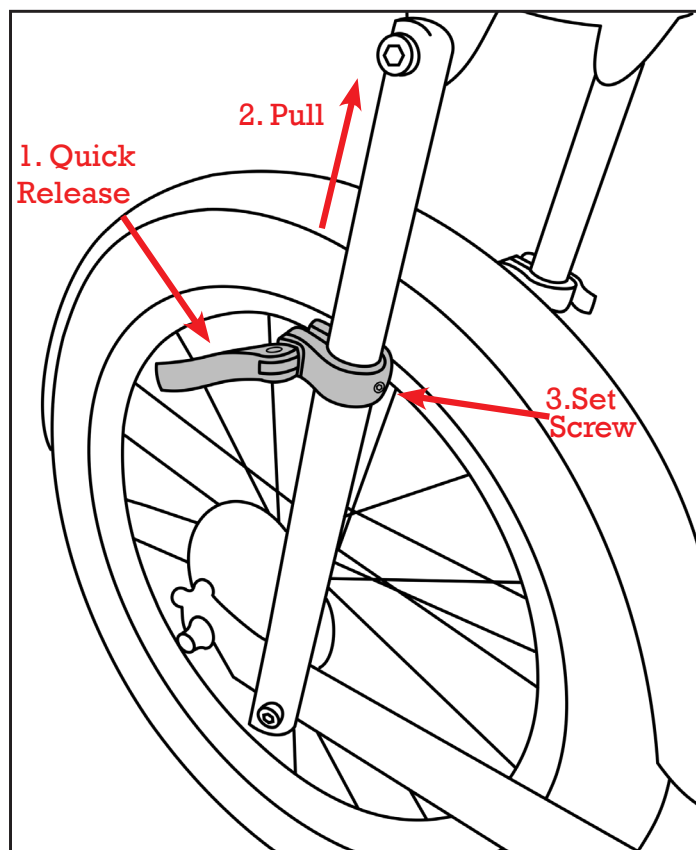
## 2 Assemble rack stays. Refer to parts list on page one for fastener specifications.



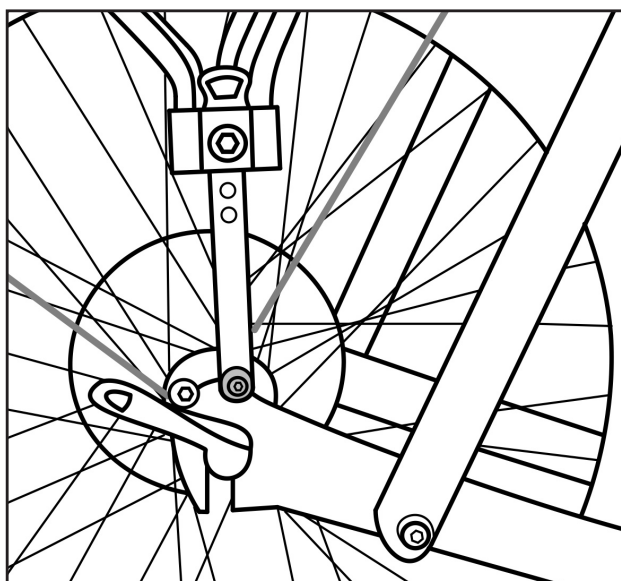
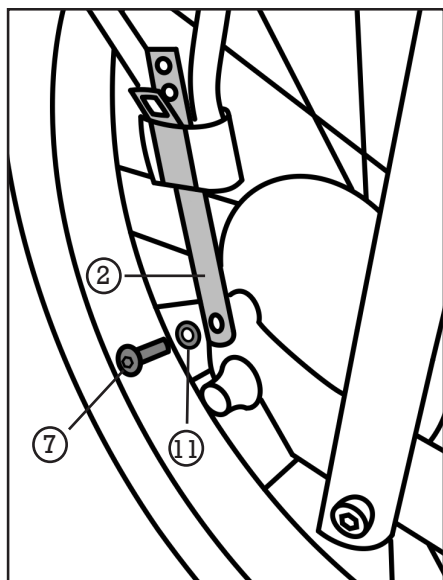
## 3 Attach rack stay assemblies to rear rack using the M6 flat washers and M6 nyloc nuts. Leave M6 nuts loose for final adjustment. Note: Choose the appropriate rack stay mounting slot for best alignment with trike.



- 4** Loosen seat stay quick release levers and detach upper seat stays from lower seat stays. Loosen seat stay quick release set screws and remove clamps.



- 5** Attach rack riser to frame using M6x14 bolt and M6 split washer.



6

Slide rack clamp/stay assemblies onto seat stays, leaving the fasteners loose. Level the rack and tighten all fasteners. Reinstall seat stay clamps and attach seat stays.

